

Bibbulmun Track CONSTRUCTION VEHICLE ACCESS

April - May 2018



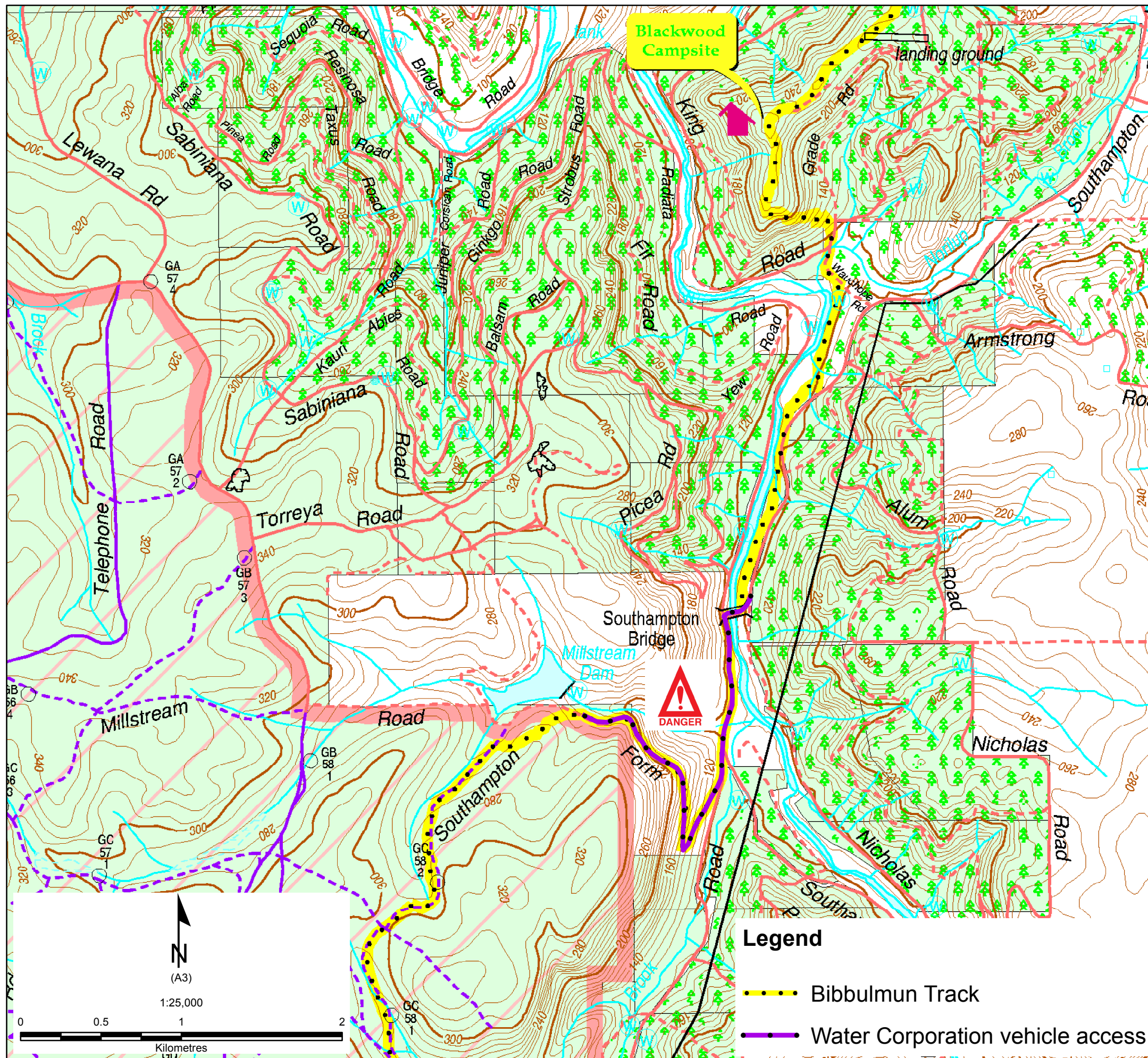
CONSTRUCTION VEHICLES Millstream Dam

From 26 April 2018 the Water Corporation will be completing essential remediation work at Millstream Dam.

As part of this work, light construction vehicles will driving along a section of the Bibbulmun Track to access this construction site.

Walkers should take care whilst in this area.

For further information regarding this work, please contact Elicia Wheat, Advisor - Community Engagement at the Water Corporation on (08) 9420 3265 or via email Elicia.Wheat@watercorporation.com.au



If applicable this map is based on information provided by and with the permission of the Western Australian Land Information Authority (Landgate) (2013)
Roads and tracks on land managed by the Department of Biodiversity, Conservation and Attractions may contain unmarked hazards and their surface condition is variable. Exercise caution and drive to conditions on all roads.
The Department of Biodiversity, Conservation and Attractions does not guarantee that this map is without flaw of any kind and disclaims all liability for any errors, loss or other consequence which may arise from relying on any information depicted.



Department of Biodiversity,
Conservation and Attractions

