

# Munda Biddi Trail

October 2023



## PERMANENT REALIGNMENT

### Jarrahdale - Wungong Campsite

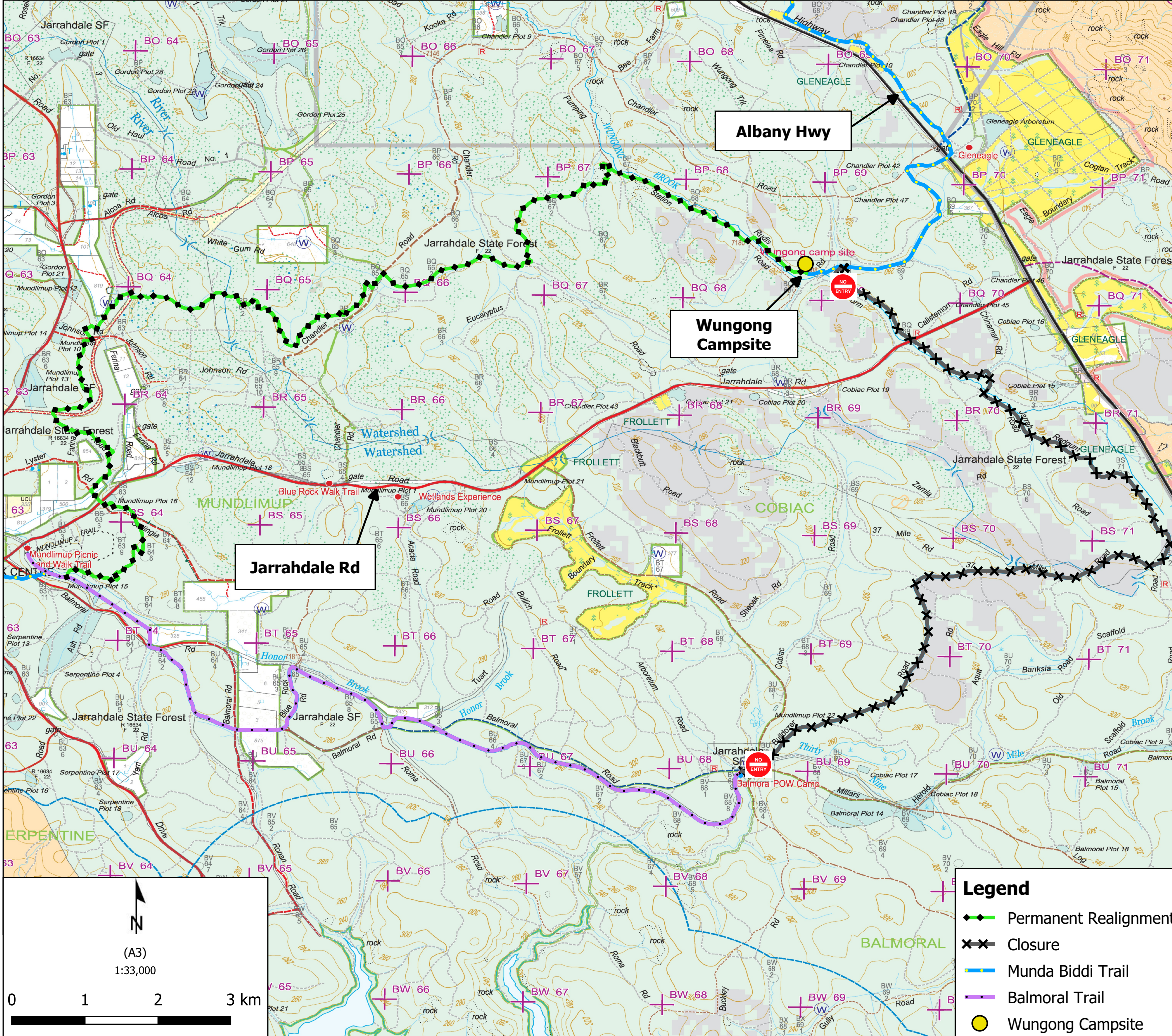
The Munda Biddi Trail has been permanently realigned for 21km.

The Balmoral Trail remains open as shown on this map.

A downloadable map is available at [alerts.dbca.wa.gov.au](https://alerts.dbca.wa.gov.au)

For your safety adhere to and follow all signage and instructions.

For more information, please contact the Parks and Wildlife Service Mundaring office on (08) 9290 6100.



If applicable this map is based on information provided by and with the permission of the Western Australia Land Information Authority (Landgate) (2013) Roads and tracks on land managed by the Department of Biodiversity, Conservation and Attractions may contain unmarked hazards and their surface condition is variable. Exercise caution and drive to conditions on all roads. The Department of Biodiversity, Conservation and Attractions does not guarantee that this map is without flaw of any kind and disclaims all liability for errors, loss or other consequence which may arise from relying on any information depicted.