

Bibbulmun Track TRACK CLOSED

2017



CONSTRUCTION DIVERSION

Mundaring Weir

The Bibbulmun Track is closed for approximately 625m while the Water Corporation undertake construction works. Access across the weir wall is not available.

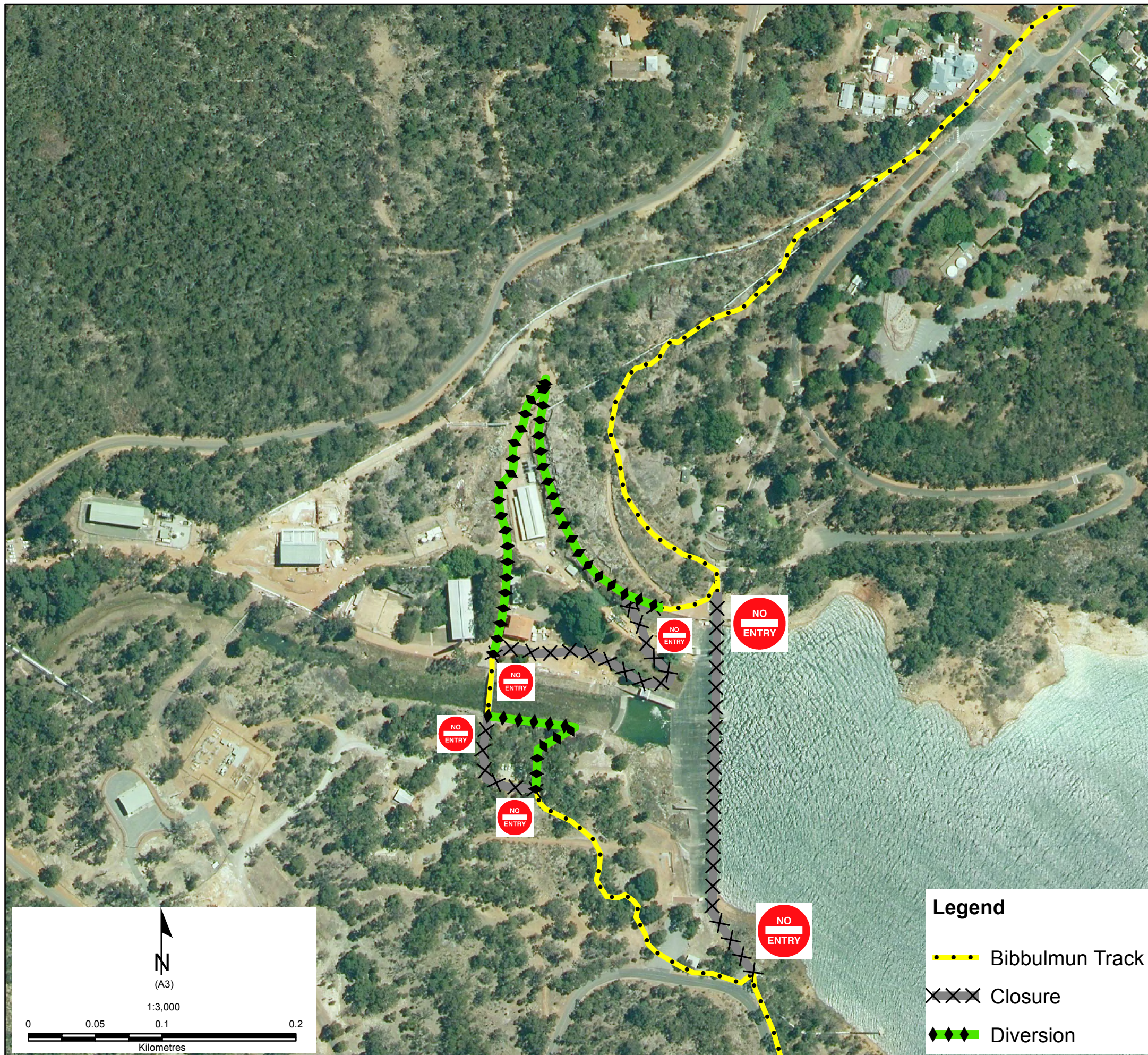
A 360m diversion is in operation as shown in green on the map.

The original alignment will remain closed until declared safe.

For your safety remain on the marked diversion, adhere to all signage and directions from staff.

Walkers should be aware of construction vehicles and other traffic while on the Track.

For more information contact the Water Corporation on 13 13 85 or the Department of Parks and Wildlife Mundaring on (08) 9290 6100.



Legend

- Bibbulmun Track
- XXXX Closure
- ◆◆◆ Diversion



Department of
Parks and Wildlife

