

# Bibbulmun Track DIVERSION

September 2024



## INLET OPENING

Torbay Inlet

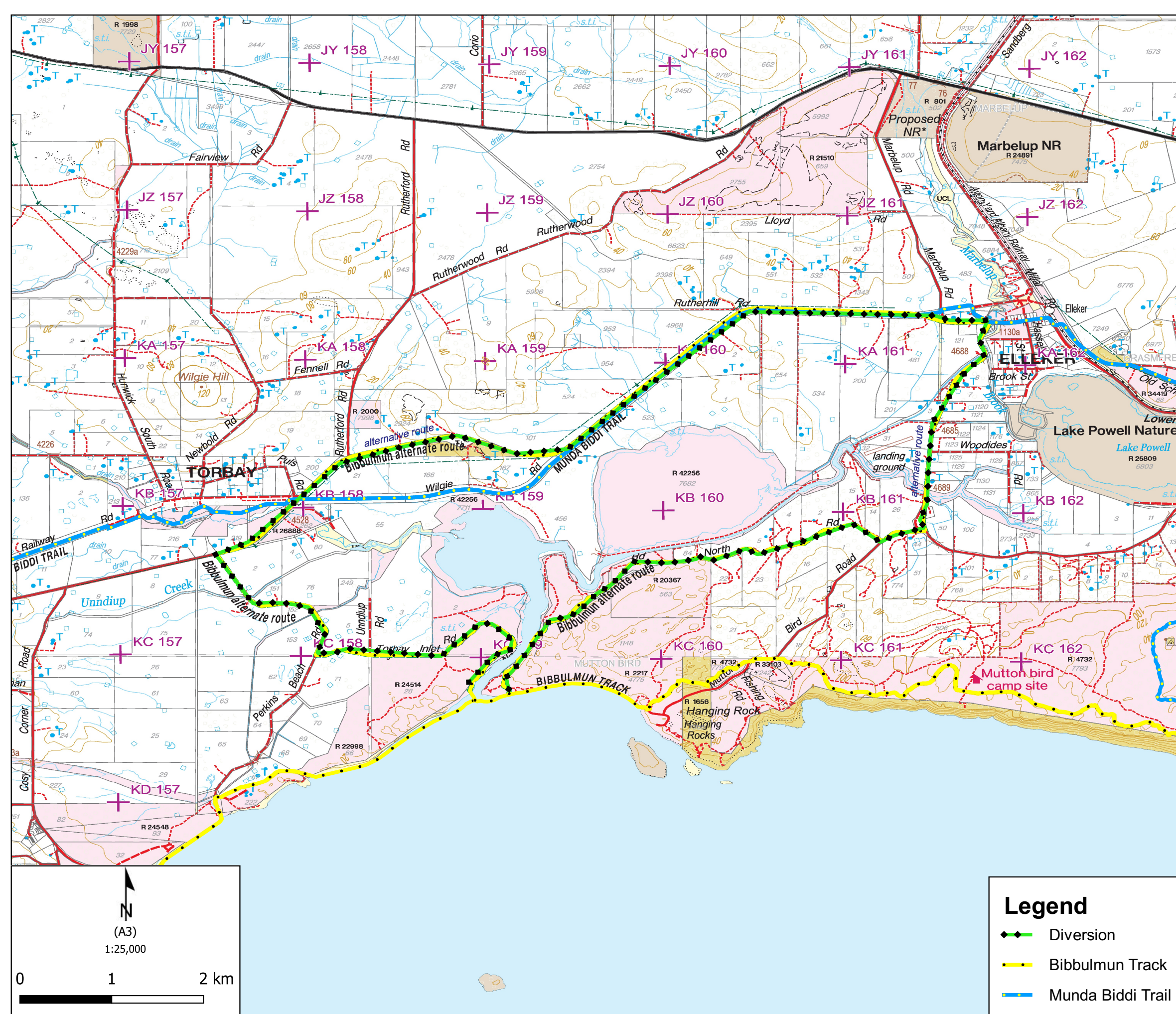
The Water Corporation have advised that they will be opening the sandbar across Torbay Inlet on Friday 6 September 2024 on the high tide.

When the sandbar opens water is likely to be flowing swiftly initially through a deep channel. Large volumes of water, high tide and wind may combine to create large waves and dangerous surges.

Conditions may improve with low tide and it may be worthwhile to wait it out or try crossing further upstream. Tide information is available from the Bureau of Meteorology at [www.bom.gov.au](http://www.bom.gov.au).

Do not cross if you have any doubt at all about the depth of the water or wading across. Walkers should unfasten hip and chest buckles from backpack before wading across.

For more information contact the Parks and Wildlife Service Albany office on (08) 9842 4500 or the Water Corporation on 13 13 85.



If applicable this map is based on information provided by and with the permission of the Western Australia Land Information Authority (Landgate) (2013) Roads and tracks on land managed by the Department of Biodiversity, Conservation and Attractions may contain unmarked hazards and their surface condition is variable. Exercise caution and drive to conditions on all roads. The Department of Biodiversity, Conservation and Attractions does not guarantee that this map is without flaw of any kind and disclaims all liability for errors, loss or other consequence which may arise from relying on any information depicted.



Department of Biodiversity, Conservation and Attractions

