

Bibbulmun Track DIVERSION

Maintenance will take place in

May 2026

The trail closure will commence at the time of maintenance works and will be open as soon as possible after completion.



MAINTENANCE

Cosy Corner Staircase

The Bibbulmun Track is closed for 0.65km due to structural repairs to the Cosy Corner staircase.

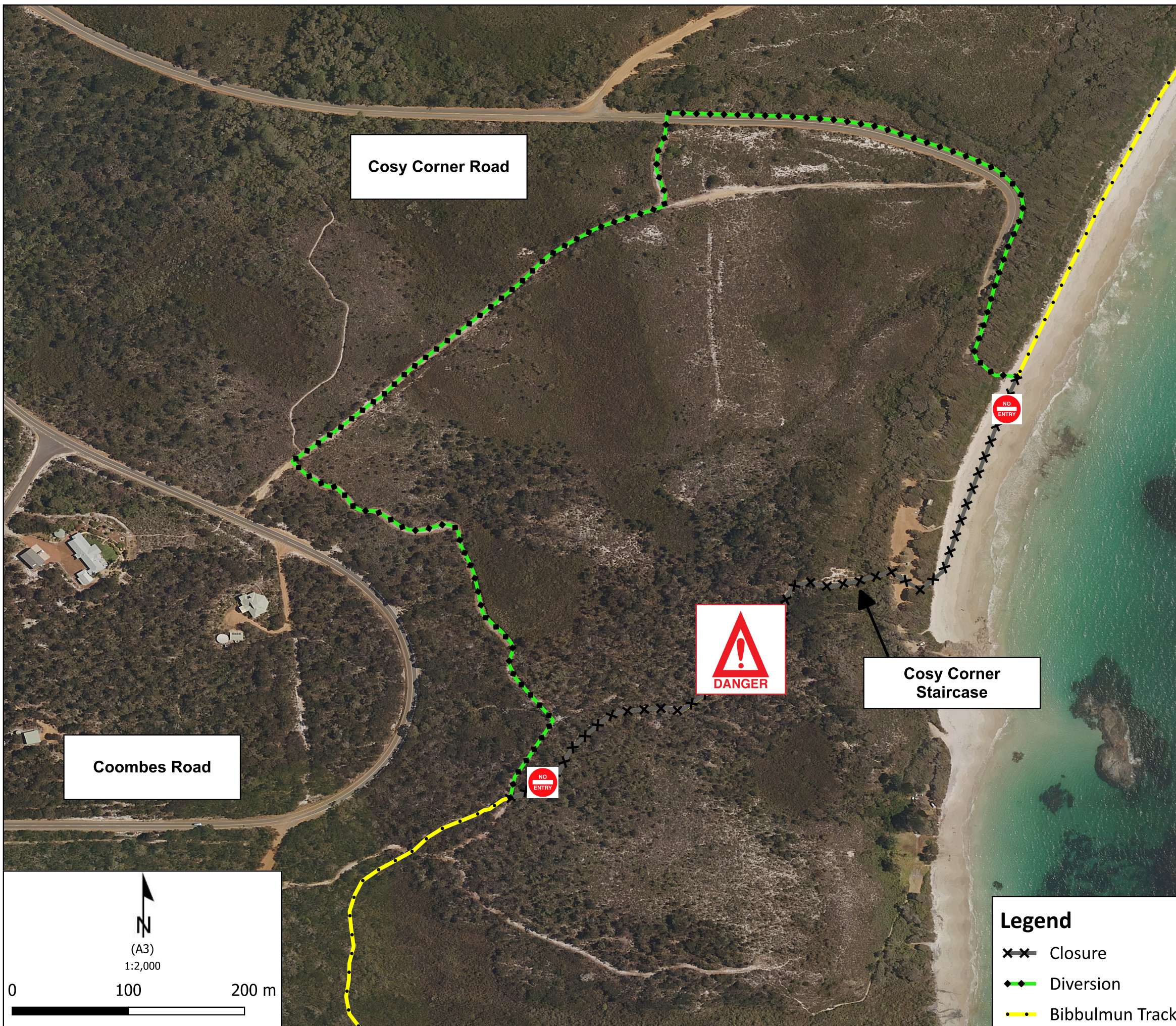
A 1.42km diversion is in place.

The original route will remain closed until declared safe.

For your safety **DO NOT** enter any closed trail, stay on the marked diversion and follow all signage or instructions from Parks and Wildlife and other staff.

A section of the diversion is along Cosy Corner Road. Walkers should be aware of maintenance vehicles and other traffic in the area.

For more information contact the Parks and Wildlife Service Albany office on (08) 9842 4500.



If applicable this map is based on information provided by and with the permission of the Western Australia Land Information Authority (Landgate) (2013) Roads and tracks on land managed by the Department of Biodiversity, Conservation and Attractions may contain unmarked hazards and their surface condition is variable. Exercise caution and drive to conditions on all roads. The Department of Biodiversity, Conservation and Attractions does not guarantee that this map is without flaw of any kind and disclaims all liability for errors, loss or other consequence which may arise from relying on any information depicted.



Department of Biodiversity,
Conservation and Attractions

